

CD digipack layout



Scale 1:1

----- Bleed (min. 3 mm)

----- Cutting line

Logos and text have to be placed at least 3 mm away from cutting lines.

Artwork have to be prepared in CMYK color profile.

All texts have to be outlined.

Designers contacts:

First & Second Names:

Phone.:

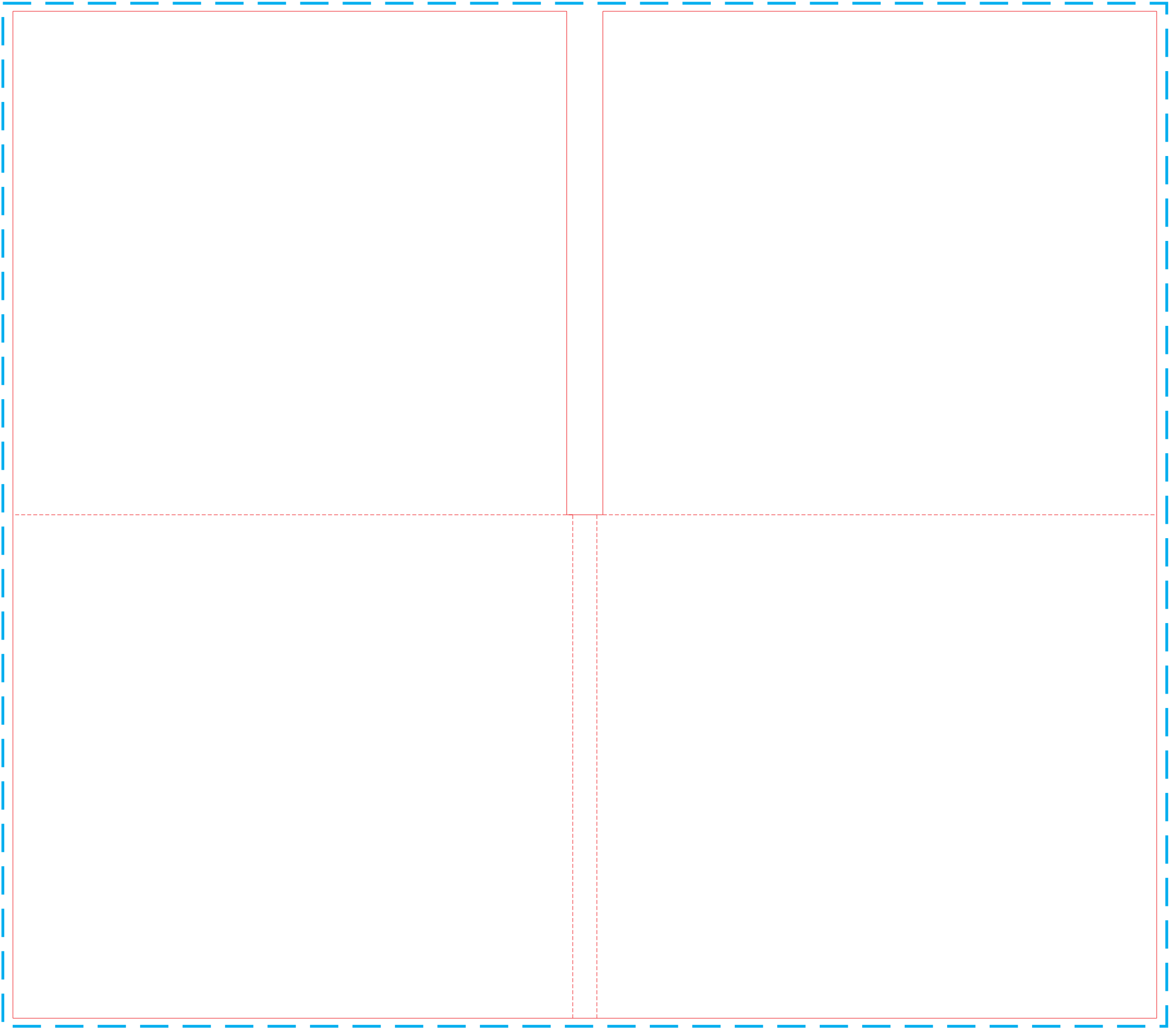
E-mail.:

EN



CD TRAY

INSIDE



BACK

FRONT